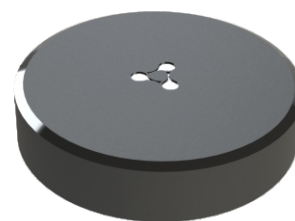


- Universal Wi-Fi repeater
- 1 x Ethernet port
- Dual-band Wi-Fi
- Wi-Fi EasyMesh*



RR-10 is a universal wireless signal repeater designed to extend wireless networks coverage and amplify Wi-Fi signal strength. The solution helps to eliminate blind spots and optimize the operation of your Wi-Fi network.

Wireless connection

RR-10 repeater provides high data rate due to the support for IEEE 802.11n/ac. The use of MIMO technology and internal antennas makes the RR-10 a universal solution for extending a home network and providing high-quality 4K multimedia transmission.

Advantages of EasyMesh* technology

- Network intelligence: a self-organizing and self-optimizing network collects information and responds to network conditions for maximum performance
- Efficient load balancing: allows devices to switch to a better connection and avoid interference
- Scalability: allows adding multi-vendor Wi-Fi EasyMesh access points

Interface configuration

Name	Ethernet	Wi-Fi
RR-10	1x1G	IEEE 802.11n, 2*2, 300 Mbps, 2.4 GHz IEEE 802.11ac, 2*2, 866 Mbps, 5 GHz

Features and capabilities

Main technical specifications

- RAM 128 MB
- Flash 16 MB
- OS Linux 3.10

Interfaces

- 1 x 10/100/1000 (RJ45) Ethernet port
- WiFi IEEE 802.11b/g/n 2.4 GHz and 802.11a/n/ac 5 GHz

Wireless interface parameters

- EasyMesh*
- WPA/WPA2
- WMM
- WPS
- Extended list of Wi-Fi interface configuration parameters
- Wireless Multicast Forwarding

- WiFi IEEE 802.11a/b/g/n/ac

- Frequency range:

- 2412-2472 MHz,
- 5180-5320 MHz,
- 5660-5805 MHz

- MIMO:

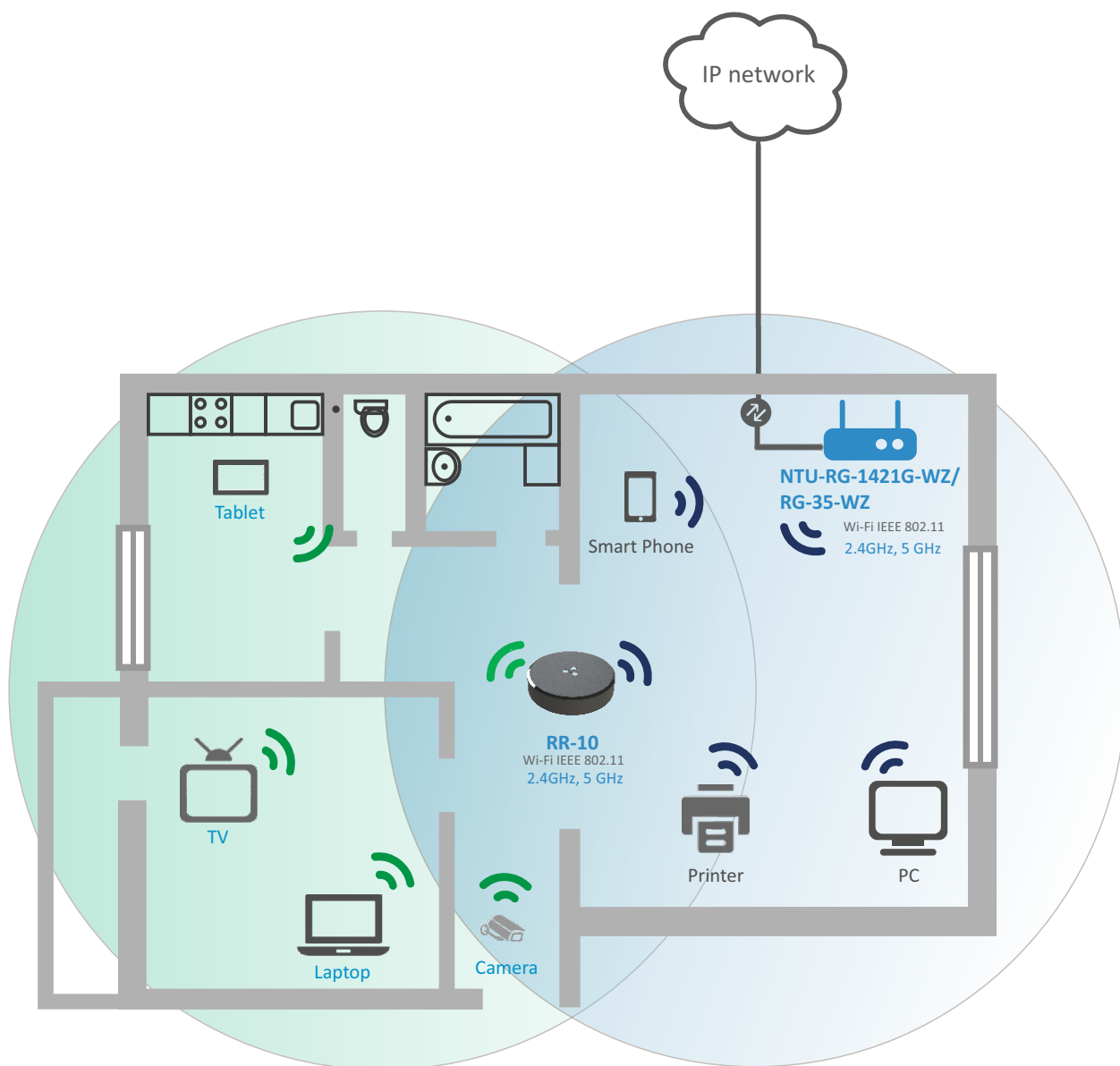
- 2.4 GHz 2x2
- 5 GHz 2x2

Management and diagnostics


- WEB interface
- TR-069*

* Not supported in the current firmware version 1.0.0

Use case



Ordering information

Name	Description	Image
RR-10	1 x 10/100/1000Base-T Ethernet port, Wi-Fi (802.11n, 2*2 -300Mbps - 2.4GHz +802.11ac, 2*2 - 866 Mbps - 5GHz)	

Contact us

+7 (383) 274 10 01
+7 (383) 274 48 48

eltex@eltex-co.ru

www.eltex-co.com

About Eltex

Eltex company is a leading Russian developer and manufacturer of telecommunication equipment with 25 years of history. Integrity of solutions and seamless integration capability into Customer infrastructure is a priority area of company development.